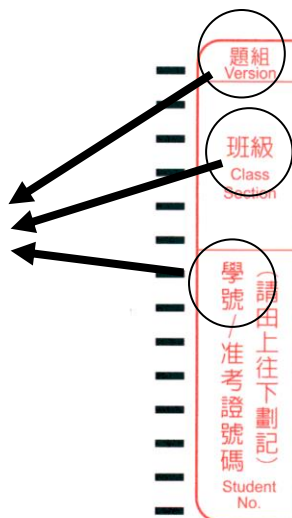


電腦劃卡注意事項

Notice on writing the answer cards for PE Tests.

- 一、請同學使用 HB 或 2B 鉛筆，畫線要粗黑、清晰，不可出格。
Please fill in the box in the answering card as dark as possible (2B or HB pencil only); however, it cannot go outside of the box.
- 二、正式考試時，請同學務必聽前段的中文解說，按照指示進行考試。
Please listen to the instructions in Chinese and do as the speaker says.
- 三、答案卡前三欄（題組、班級代號及學號）有錯者，一律扣減該科成績 10 分，如有劃錯，不要塗改，請向監考老師換取備卡，另行填劃。此外，答案欄部分請同學不要塗改，若因塗改而導致電腦閱卷有誤差，一切後果自行負責。
If you make any mistakes in the first three columns of the answer card (version, class no., student no.), 10 pts will be deducted from your grade. If you do make mistakes on these three columns, please do not erase them; ask for a new card from the proctor. Also, DO NOT use an eraser. If the computer cannot read the answer, you will be responsible for it.
- 四、謝謝同學的合作，祝考試順利。
Thanks for your attention and cooperation. Good luck with your test!!

◎不能塗改！
DO NOT ERASE



銘傳大學 電腦閱卷答案卡 MCU Exam Answer Card

題組 Version	0 1 2 3 4 5 6 7 8 9	學號 Student No. : 00130123 (准考證號碼)
班級 Class Section	0 1 2 3 4 5 6 7 8 9	姓名 Name : 王大忠
學號 准考證號碼 Student No.	0 1 2 3 4 5 6 7 8 9	班級 Class Section : 01146
	0 1 2 3 4 5 6 7 8 9	科目 Course : 應用英文(-)
	0 1 2 3 4 5 6 7 8 9	劃記說明 NOTICES
	0 1 2 3 4 5 6 7 8 9	1. 請使用2B鉛筆作答。 2. 切勿使用立可白或其他修正液。 1. You must use a No.2 lead pencil. 2. Don't cross out or cover up answers you wish to change.

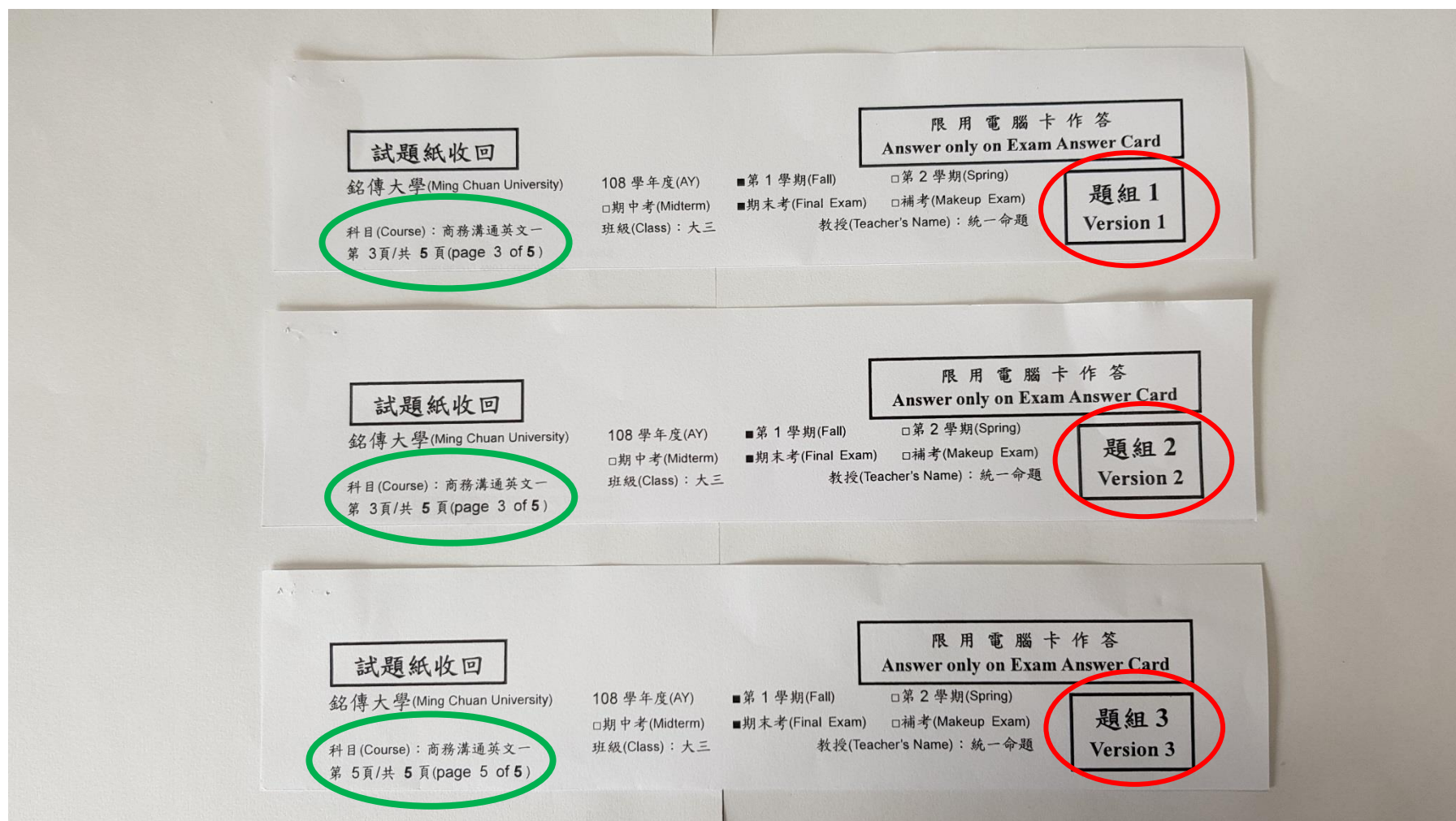
↓ 注意題號，不要劃錯

1	A B C D E	26	A B C D E	51	A B C D E	76	A B C D E
2	A B C D E	27	A B C D E	52	A B C D E	77	A B C D E
3	A B C D E	28	A B C D E	53	A B C D E	78	A B C D E
4	A B C D E	29	A B C D E	54	A B C D E	79	A B C D E
5	A B C D E	30	A B C D E	55	A B C D E	80	A B C D E
6	A B C D E	31	A B C D E	56	A B C D E	81	A B C D E
7	A B C D E	32	A B C D E	57	A B C D E	82	A B C D E
8	A B C D E	33	A B C D E	58	A B C D E	83	A B C D E
9	A B C D E	34	A B C D E	59	A B C D E	84	A B C D E
10	A B C D E	35	A B C D E	60	A B C D E	85	A B C D E
11	A B C D E	36	A B C D E	61	A B C D E	86	A B C D E
12	A B C D E	37	A B C D E	62	A B C D E	87	A B C D E
13	A B C D E	38	A B C D E	63	A B C D E	88	A B C D E
14	A B C D E	39	A B C D E	64	A B C D E	89	A B C D E
15	A B C D E	40	A B C D E	65	A B C D E	90	A B C D E
16	A B C D E	41	A B C D E	66	A B C D E	91	A B C D E
17	A B C D E	42	A B C D E	67	A B C D E	92	A B C D E
18	A B C D E	43	A B C D E	68	A B C D E	93	A B C D E
19	A B C D E	44	A B C D E	69	A B C D E	94	A B C D E
20	A B C D E	45	A B C D E	70	A B C D E	95	A B C D E
21	A B C D E	46	A B C D E	71	A B C D E	96	A B C D E
22	A B C D E	47	A B C D E	72	A B C D E	97	A B C D E
23	A B C D E	48	A B C D E	73	A B C D E	98	A B C D E
24	A B C D E	49	A B C D E	74	A B C D E	99	A B C D E
25	A B C D E	50	A B C D E	75	A B C D E	100	A B C D E

期中考/期末考：試題卷之頁數及題組標示：

Midterm/Final exams

Total number of pages and version



同學在拿到試題卷時，務必確認試卷的頁數有無缺少，並請依照個人試卷上的題組，詳實填劃在電腦答案卡上。考試時，如有任何問題，請當下立即向監考老師反映。

Students should verify whether they are given ALL pages of the exam question paper and mark the version number on the computer card accordingly. Should students have any questions, please notify the proctor immediately.